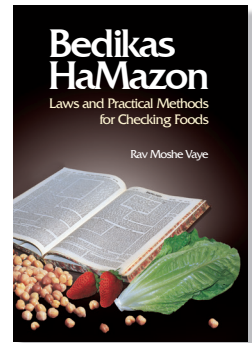


# INFORMATION SHEET

## Flesh Fly Maggot

based on Rav Moshe Vaye's sefer Bedikas HaMazon

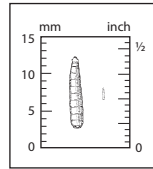


### FLY MAGGOTS

#### Infestation

Flies may lay eggs or spawn maggots on animal protein such as meat, chicken, fish, eggs, and cheese.

#### Description



Flesh fly maggot



Green fly



Blue fly



Chess fly

### FLESH FLY MAGGOTS

There are various kinds of meat flies: green or blue metallic flies 12 millimeters long, as well as "chess flies" whose bodies are colored like a chessboard, with gray and black squares, and whose length is one and a half centimeters. The flies are attracted to meat and fish (cooked or raw) and sometimes to cheese and cracked or shelled eggs, and even scrambled eggs.

Some flies spawn tens of living maggots, while others lay tens of eggs on the meat or fish.

The eggs look like tiny grains of rice, 1-2 millimeters long, and they are clustered together. Several hours after the eggs are laid, they hatch into small maggots, which then penetrate the meat.

The maggots start out about 2 millimeters long. They grow rapidly, and within a week reach a length of 15 millimeters. They are white with a tiny black dot at the head. Tens or even hundreds of eggs or maggots are usually laid at once.

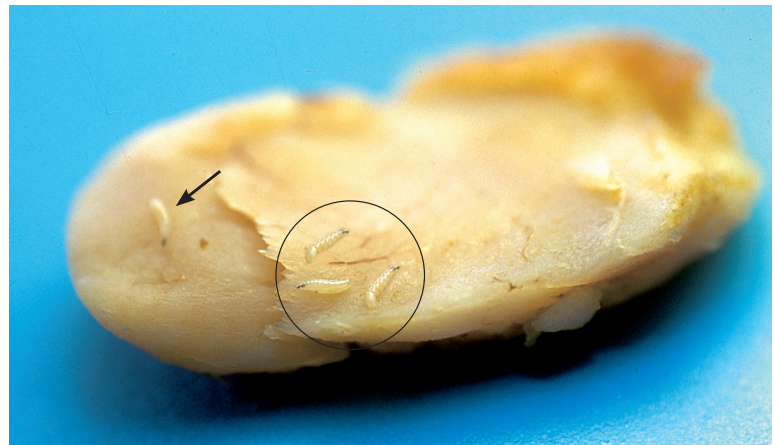
#### Procedure

Care should be taken to cover animal protein foods well, both cooked and uncooked, or to keep them in the refrigerator.

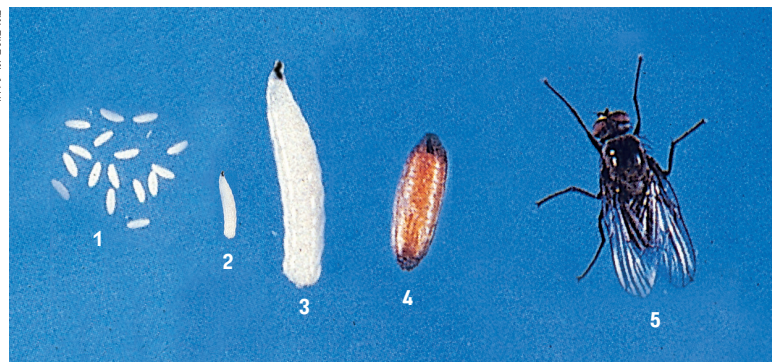
Meat that was stored properly does not need to be checked.

If the eggs of a fly are detected on food, remove them and wash the food well.

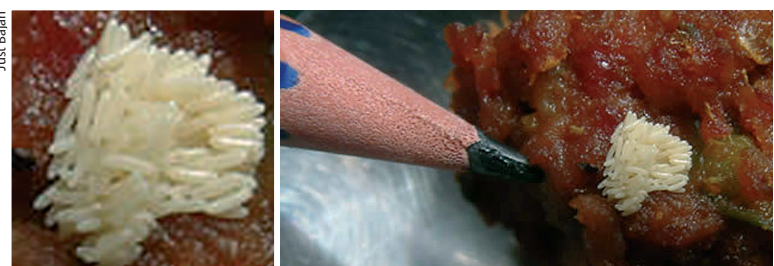
If fly maggots are noticed on or in food, that food should not be used, because the maggots get inside the meat (fish, chicken, etc.)



1. Flesh fly maggots on a piece of hake (magnified 3x).



2. Stages of development of the fly (magnified):  
1. eggs 2. young maggot 3. adult maggot 4. pupa 5. adult fly



3. A cluster of flesh fly eggs on meat. The pencil shows the size of the eggs.  
Inset at left: the eggs magnified.